

# HOW TO LOCATE A QUALIFIED AUDIOLOGIST

All Members of the Audiological Society of Australia (ASA) are University Graduates bound by a Professional Code of Ethics and Standards of Practice and have access to postgraduate education programs. Look for the letters MAudSA (CCP) after the audiologist's name to ensure that you are consulting a qualified audiologist who has completed the ASA Certificate of Clinical Practice (CCP).

## TO OBTAIN A FREE DIRECTORY OF CLINICS WHERE QUALIFIED AUDIOLOGISTS WORK VISIT:

[www.audiology.asn.au](http://www.audiology.asn.au)

or contact us on  
(03) 9416 4606



Audiological Society of Australia Inc. T/A  
**AUDIOLOGY AUSTRALIA**

Suite 7, 476 Canterbury Road,  
Forest Hill, VIC. 3131  
**Telephone:** 03 9416 4606  
**Facsimile:** 03 9416 4607

This information is provided for your benefit by  
Audiology Australia with the generous support of:



[www.sonici.com.au](http://www.sonici.com.au)



[www.phonak.com.au](http://www.phonak.com.au)



[www.starkey.com](http://www.starkey.com)



**Cochlear**

Hear now. And always

[www.cochlear.com](http://www.cochlear.com)



[www.widex.com.au](http://www.widex.com.au)



[www.unitronhearing.com.au](http://www.unitronhearing.com.au)



[www.gnresound.com.au](http://www.gnresound.com.au)



leading diagnostic solutions

[www.interacoustics.com.au](http://www.interacoustics.com.au)



[www.evertone.com.au](http://www.evertone.com.au)



[www.siemens-hearing.com.au](http://www.siemens-hearing.com.au)

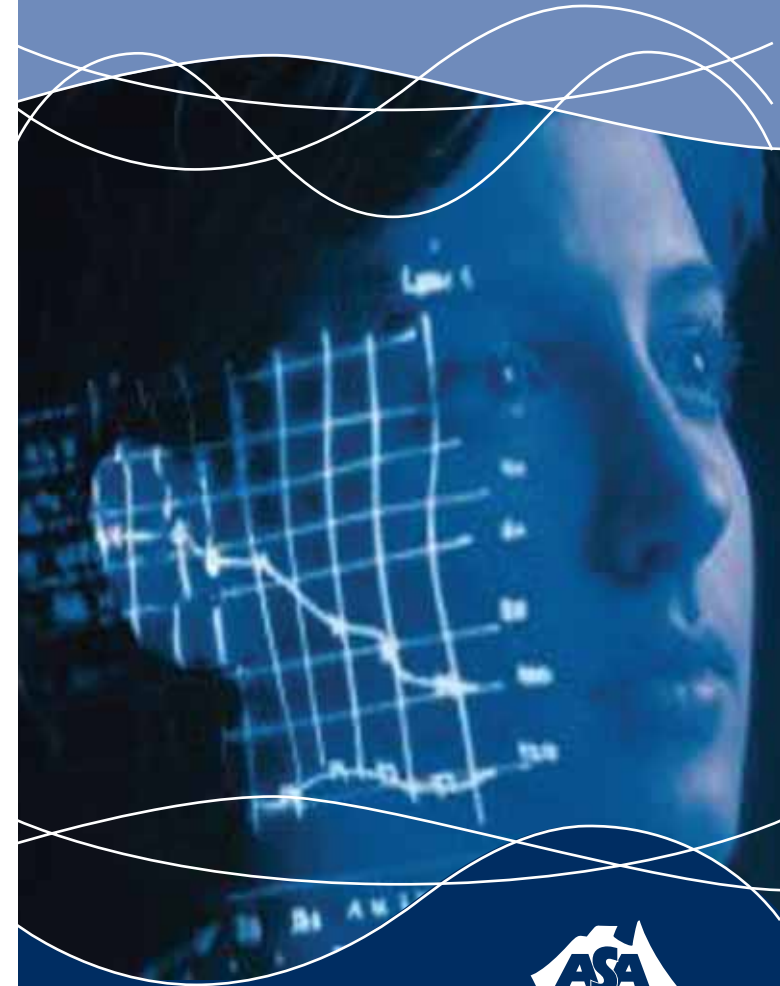
Your local qualified Audiologist is:

ASA\_IC005

VALID TO 31/12/08

# AUDIOLOGY

and How We Hear



Your Hearing Health Professionals



## HEARING LOSS

Research indicates that approx 1 in 7 people have a hearing impairment. Most hearing losses occur gradually so the symptoms are often difficult to recognize. While hearing loss isn't reversible, in the majority of cases it can be managed and often compensated for.

Hearing Loss is commonly described as mild, moderate, severe and profound. The most common type of hearing loss is mild to moderate. People with a mild to moderate hearing loss often report that "they can hear the conversation, but are unable to understand the speech"

## CAUSES OF HEARING LOSS

The most common causes of hearing loss include:

- Natural process of ageing
- Middle Ear and Inner Ear infections - Viral or bacterial
- Noise Exposure - May include brief or long term exposure to loud sounds
- Congenital - Some family related hearing conditions may not become evident until adulthood
- Trauma and head injury - Such as a severe blow to the head
- Medications - Certain medications are toxic to the auditory system and cause permanent damage to the inner ear

## SIGNS OF HEARING LOSS

- Need to ask people to repeat themselves
- People appear to be mumbling
- Straining to hear soft speech
- Tinnitus - ringing or noises in the ears
- TV/Radio volume often needs to be increased
- Difficulty hearing conversation on the telephone
- Conversation in background noise is more difficult than it used to be
- Female voices are more difficult to understand

## CONSEQUENCES OF HEARING LOSS

- Isolation
- Anxiety
- Fatigue
- Depression

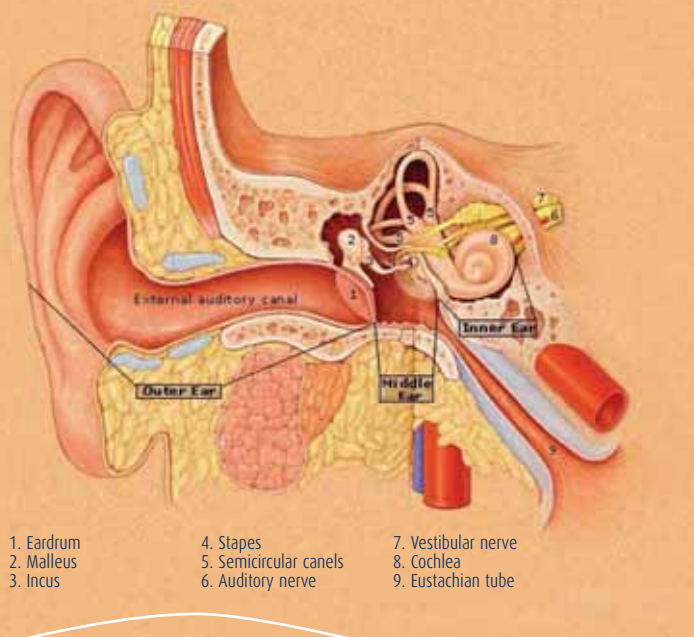
When hearing begins to deteriorate the brain tends to forget how things sound. Often people with a hearing loss are unaware they are missing the softer sounds of everyday life. Audiologists can assess your hearing needs and design a hearing rehabilitation program to improve your communication with others.

## HEARING ASSESSMENT AND REHABILITATION

This includes a detailed assessment of the auditory system and communication needs to identify specific areas which may require rehabilitation.

A comprehensive rehabilitation program may include:

- Counseling and assistance in listening, and communication strategies
- Training to improve speech discrimination and recognition
- Prescription, fitting, and evaluation of hearing aids, and assistive listening devices
- Involving a support network to assist with rehabilitation program
- Liaising with other professionals and agencies to assist with individual needs



1. Eardrum
2. Malleus
3. Incus
4. Stapes
5. Semicircular canals
6. Auditory nerve
7. Vestibular nerve
8. Cochlea
9. Eustachian tube

## PARTS OF THE EAR

The hearing system consists of 3 distinct areas: The Outer Ear, The Middle Ear, and The Inner Ear. Each part plays an integral role in directing the complex acoustic signals to the central processing unit, the brain.

**Outer Ear** - The Pinna to the eardrum

**Middle Ear** - Air filled space located behind the eardrum, housing the 3 smallest bones in the body, the malleus, incus and stapes, and the Eustachian tube which joins the back of the nasal passages.

**Inner Ear** - Including the Cochlea and neural pathway to the brain

